

The faculty develops organically



The disciplines necessarily discrete



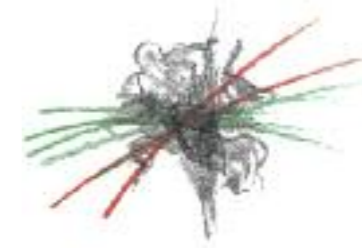
The integrated studio becomes the heart and soul of the place



The desire lines of the Campus



An abstracted and extended landscape



The urbanity of Concrete Lawn with the heart of the faculty



The culture of the faculty develops organically; the disciplines – necessarily discrete at their most reflective – enmesh in a communal culture of engagement, dialogue, debate, investigation, and celebration. The integrated studio becomes the heart and soul of the place – the studio is what it wants to be. With the location of the Concrete Lawn the desire lines of the Campus can pass through the faculty, engage with an abstracted and extended landscape; and finally merge the urbanity of Concrete Lawn with the heart of the faculty.





Igloo

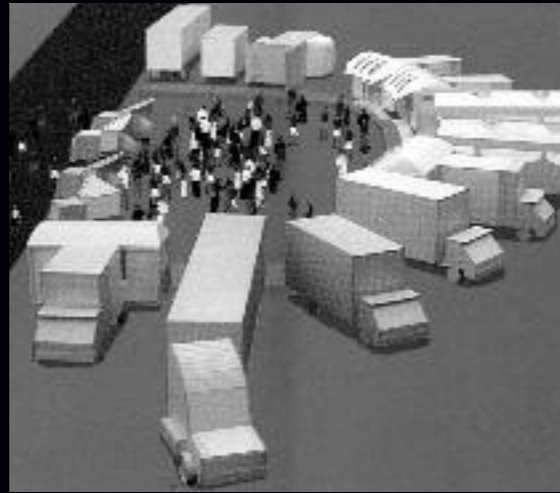
REFUGE MONASTIC



SOVEREIGN HOUSE
NEW ZEALAND

“Sovereign House can stand alongside the small number of inspirational examples of office buildings from around the world.”

JOHN HUNT CNZM, FNZIA, PHD
PROFESSOR OF ARCHITECTURE
SCHOOL OF ARCHITECTURE AND PLANNING
UNIVERSITY OF AUCKLAND



Caravans



CHALLENGER WORKPLACE
SYDNEY

“The new environment allows us to provide clients and visitors a true impression of our progressive and transparent corporate environment – a culture we should all be very proud of.”

BRIAN BENARI, CEO, WHOLESAL FINANCE, CHALLENGER



Tent



CLEMENGER BBDO
SYDNEY

“The exciting sense of renewal and rejuvenation that permeates our new offices will also be felt in all levels of the organisation and most importantly... the work, the work, the work.”

CLEMENGER BBDO PRESS RELEASE

Pavilion

Pavilion (n) [F. pavillon, fr. L. pavillus a butterfly, also, a tent, because spread out like a butterfly's wings] 1. A temporary portable habitation, a large tent, a marquee, etc., a tent raised on poles. [The Greeks do not use these portable tents.] —Gibbs.

(Arch.) A single body or mass of building, contained within simple walls and a single roof, whether involved with the walls or separate of a larger edifice, or linked with other parts, and forming an angle or central feature of a larger one.

A covering, a canopy, figuratively, the sky.

Pavilion

Pavilion (n) [F. pavillon, fr. L. pavillus, a butterfly, also, a tent, because spread out like a butterfly's wings] 1. A temporary portable habitation, a large tent, a marquee, etc., a tent raised on poles. [The Greeks do not use these portable tents.] —Gibbs.

Pavilion

Pavilion (n) large and often temporary tent (syn. marquee) (Oxford English Dictionary 1st ed. 1907, Princeton 1972). In Jan. 1930 it probably denotes the canopy suspended over the judgment seat of the king.

Source: Collins 1972 Oxford Dictionary



Street

COMMUNITY SPACE



ARCHITECTURE STUDIOS
THE UNIVERSITY OF NEWCASTLE

“The true quality of this building is its modesty – it is a vessel for human activity... A principal design tenet was the architect’s belief that ‘teaching happens in the corridor’ and that the building could manipulate circulation so that social interaction between students is implicit in the movement through the spaces.”

JURY COMMENTS 1997 SIR JOHN SULMAN AWARD FOR ARCHITECTURE



LINCOLNE SCOTT
MELBOURNE

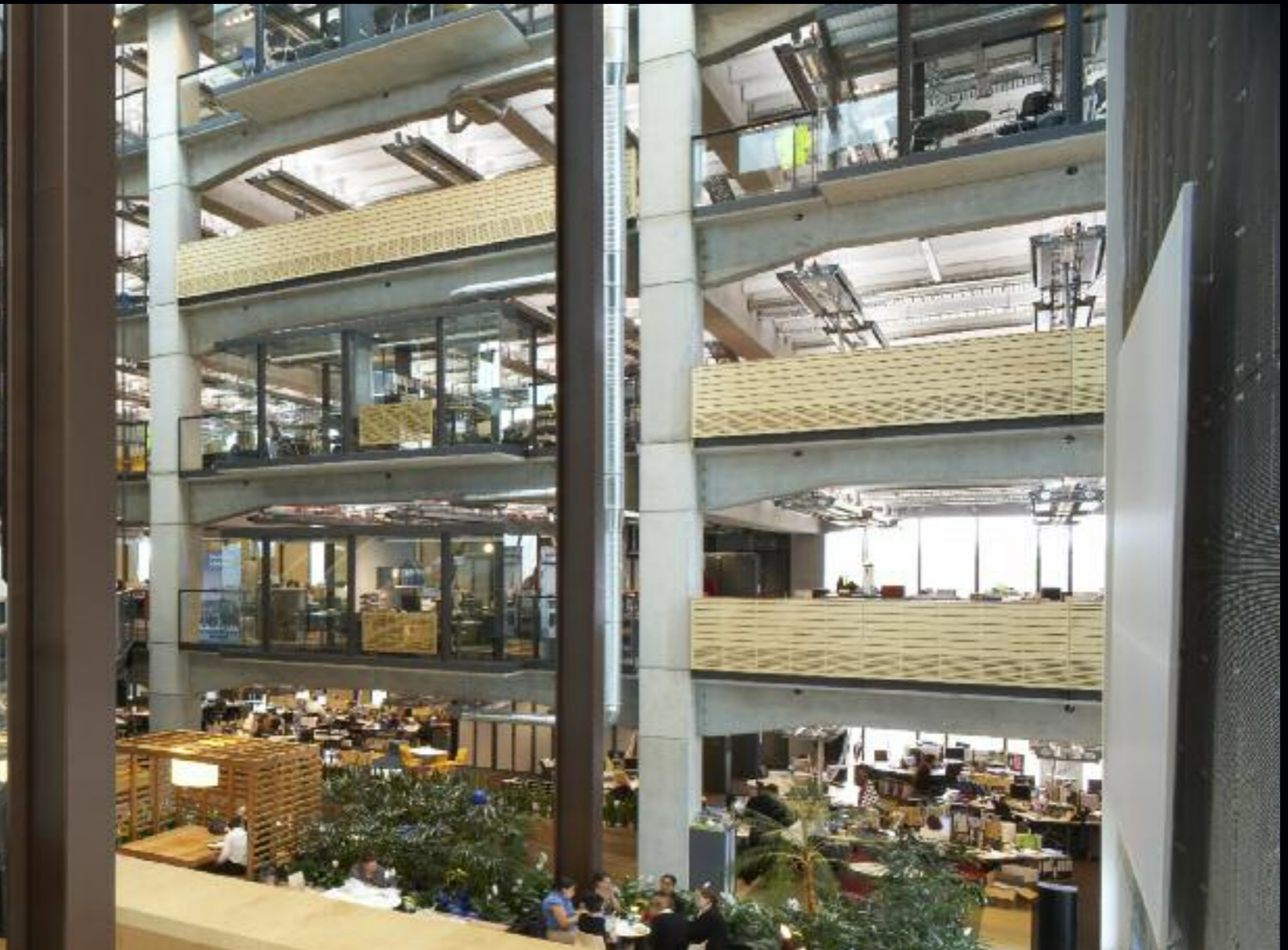
“Lincolne Scott’s Melbourne office fitout became a flagship of environmental sustainability.”

ARTICHOKE

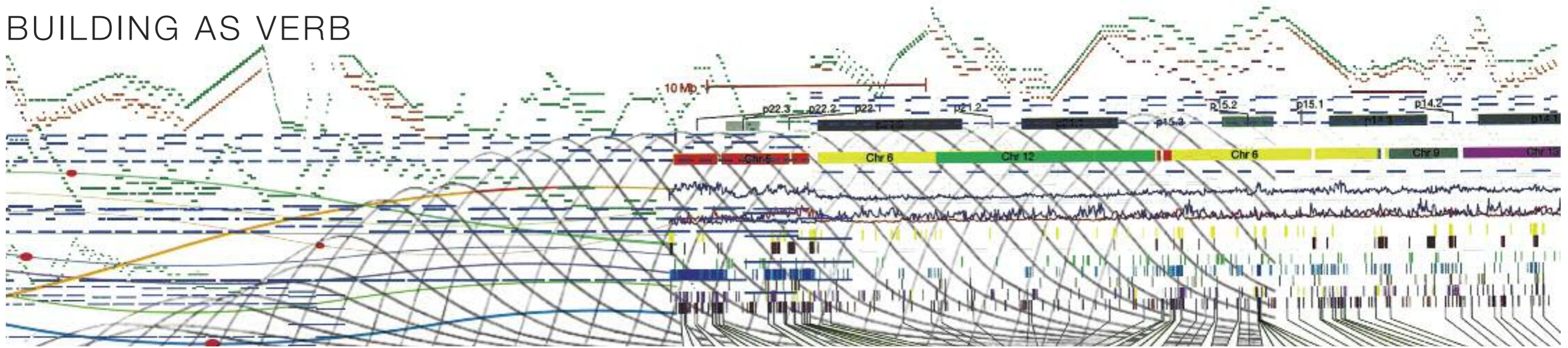


digital infrastructure social collaboration virtual memory immersive enabling experiential inclusive curriculum nurturing

Studio



BUILDING AS VERB



RAAF RICHMOND 36/37 SQUADRON HEADQUARTERS
AUSTRALIA'S FIRST 5 STAR GREEN STAR BUILDINGS AND INTERIOR
2005



STOCKLAND HEAD OFFICE
AUSTRALIA'S FIRST 6 STAR GREEN STAR INTERIOR
2009



SANTOS HEADQUARTERS
5 STAR GREEN STAR INTERIOR
2006



NATIONAL@DOCKLANDS
4.5 STAR ABGR
2004



BENDIGO BANK HEADQUARTERS
5 STAR GREEN STAR REGIONAL BUILDING
2009



National@Docklands
Melbourne
Completed 2004
Value \$250M
Client National Australia Bank
Full Architectural Service

"The built result is also a testimony to the benefits of a collaborative design process, on in which the means of achieving the desired ends need to be 'invented' as part of the programming and design process."

PROFESSOR GRAHAM BRAUN
FACULTY OF ARCHITECTURE
BUILDING AND PLANNING
ARCHITECTURE AUSTRALIA
JANUARY-FEBRUARY 2005



L5 Building
The University of New South Wales
Completed 2004
Value \$36M
Client The University of New South Wales
Full Architectural Service

"The result is a constantly changing, faceted and dynamic inner surface, subtly responsive to the changing conditions by day and curiously dominant and all powerful by night."

JURY COMMENTS
2007 RIBA INTERNATIONAL AWARD



Stockland Head Office
Sydney
Completed 2007
Value \$30M
Client Stockland Property Management Pty Ltd
Interior fitout

"The Stockland head office is developing to be an engaging environment that unifies our business, fosters the potential of our people and expresses who we are."

MATTHEW QUINN
MANAGING DIRECTOR, STOCKLAND



Santos Headquarters
Adelaide
Completed 2007
Value \$74M
Client Santos
Interior fitout

"The office has embraced the elastic relationship between private and communal space."

THE AUSTRALIAN FINANCIAL REVIEW
BOSS MAGAZINE



Bendigo Bank Headquarters
Victoria
Completed 2009
Value \$74M
Client Bendigo Bank
Full Architectural Service

"Companies are awakening to the possibility that a building or space is now a business tool and not just a facility."

PROPERTY AUSTRALIA
DECEMBER 2005-JANUARY 2006



Sovereign Head Office
New Zealand
Completed 2007
Value \$60M
Client Northcote Road 1 Holdings Limited and Sovereign Services
Full Architectural Service

"A building that celebrates those who work within it – that never lost sight of the fact that people are Sovereign's greatest asset."

HUGH BURRET
MANAGING DIRECTOR
ASB GROUP



Monash University Law Building
Melbourne
Completed 2011
Value \$75M
Client Monash University
Full Architectural Service

"They have proved to be an extraordinarily creative, responsive and professional team who have worked closely with me and the Faculty to design what should be an outstanding facility for students and staff. I have been particularly impressed by the manner in which they worked with us to develop the concept of the building and the functional brief and by their flexibility throughout the process."

PROFESSOR ARIE FREIBERG
DEAN
FACULTY OF LAW
MONASH UNIVERSITY



Campus MLC
North Sydney
Completed 2001
Value \$35M
Client MLC Insurance
Interior fitout

"The result is an exemplary piece of sustainability... The new interior that is 'Campus MLC' represents one of the most profound shifts in the history of postwar Australian office design."

PROFESSOR PHILIP GOAD
FACULTY OF ARCHITECTURE
BUILDING AND PLANNING
MELBOURNE UNIVERSITY
ARCHITECTURE AUSTRALIA
JANUARY 2001

COLLABORATION AND INNOVATION

Interdisciplinary Teamwork

In our most innovative projects we have led, together with our client, an interdisciplinary team at a level that extends beyond the traditional client/architect relationship. As a result, our design expertise coalesces with the culture and processes of the client and user. BVN's modus operandi is to work in an interdisciplinary, team-based environment with all the project participants as the best means of achieving project objectives. The approach has never been more important than on this project where there are multiple aspirations from a complex stakeholder group and expectation of significant change. BVN and Rosemary Kirkby have accrued a depth of experience in our understanding of the evolving change process and the importance of interaction between project team and building users. BVN believes that good architecture results from truly inclusive design processes married with excellent research and technical skill, with the architect as facilitator.

Respect for Commercial Parameters

There is an expectation of significant innovation on this project, and BVN accepts that there will also be an expectation that this is accomplished within normal project cost and program parameters. In order to create the time to develop innovative solutions the project needs an interdisciplinary framework for client review and decision-making which operates in a very disciplined way. The knowledge, advice and capability that Property & Campus Services can contribute to the delivery of the project cannot be underestimated. The partnership between design and operations is fundamental to an integrated solution. BVN recognises that there are likely to be opportunities for partnerships, external to the university, to provide research and funding and would welcome the opportunity to help facilitate, implement and participate in these.

Partnership and Investment Mindset

The award-winning results achieved for UNSW L5 building and UTS Fairfax as well as clients such as NAB, Santos and Stockland demonstrate our determination to work in effective, non-litigious partnerships with builders and developers. Tight budgets have often been the catalyst for particularly innovative solutions, arrived at through the commitment by all parties to the best possible outcomes. A long-term, investment mindset is shared by all members of the team.

Interdisciplinary Design Team

For the design process to work optimally we recommend an interdisciplinary, "round table" approach, ensuring all stakeholders are engaged in an integrated process of thinking and designing together from Day 1. For example, those who will have responsibility for maintaining the environment as well as using it are vital participants in the design process. This inclusive approach does not mean that programs or budgets are at risk, and indeed often results in risk being engineered out of the delivery phase as potential areas of disagreement are resolved early with commitment to speed in delivery, without diminution of the design outcome. The process of inclusion will cover all user groups, using a range of media. It covers both aspirational and functional briefs but does not end there. In our experience the best solutions arise from an iterative design process with users testing proposed solutions and prototypes. These groups have been seen to add real value to design without needing to make final decisions.

The Design Forum

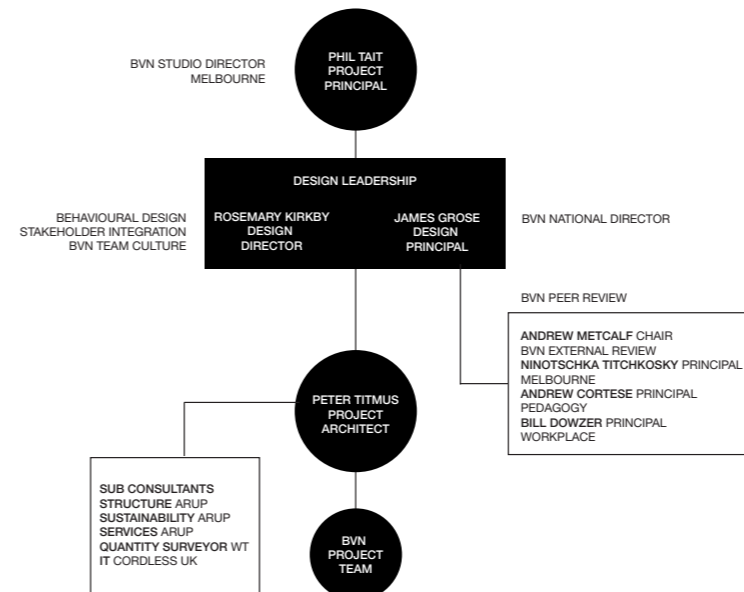
The Design Forum is the proposed mechanism to provide the "round table". The forum would be made up of the primary stakeholders and users. Those representatives would in turn have their own fora for discussion, dialogue, debate and innovation so that the Design Forum representative could bring to the table the views of many. As the project evolves, membership of the Design Forum changes relative to the point in the project cycle.

The Project Executive

Between the Design Forum and the Project Control Group sits the Project Executive. Its role is to guide the Design Forum, to establish the project Principles and processes, monitor cost, quality and program and provide the optimum conditions for teamwork.

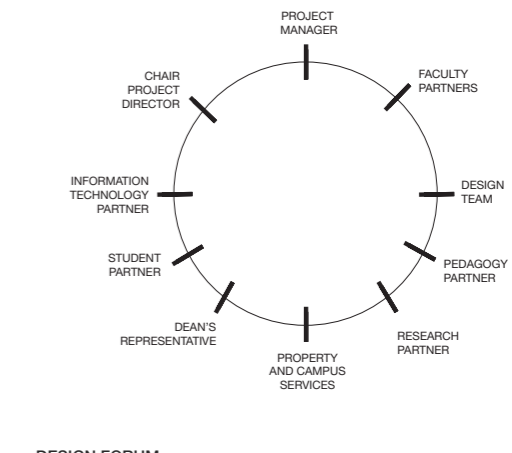
A Journey

BVN does not see the handover of the built environment as the end of the journey. Our team is very well versed in providing support to educate users and to ensure "systems" are developed and implemented to ensure promised benefits are realised. Once users are installed subtle changes to the environment can sometimes make a world of different in how it is used. BVN welcomes the opportunity to be involved in post-occupancy evaluation and the opportunity for an ongoing research partnership.

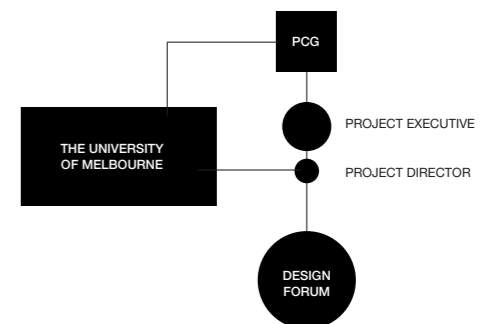


REGISTRATION
PHIL TAIT RAIA VIC 5066
JAMES GROSE RAIA VIC 5770
NINOTSCHKA TITCHKOSKY RAIA VIC 6912
ANDREW CORTESE RAIA VIC 5738
BILL DOWZER RAIA VIC 17190

BVN TEAM



DESIGN FORUM



GOVERNANCE



01



02



03



04



05



06



07



08



09



10



11



12

01 Australian Centre for Christianity and Culture Canberra
2004 RIAA ACT Commendation for Public Buildings

02 L5 Building The University of New South Wales Kensington
2007 RIBA International Award
2008 RIAA NSW Commendation Public Buildings
2005 MBA Outstanding Construction Award
2005 MBA Education Building over \$25M Award
2005 MBA Best Use of Concrete Award

03 Beijing 2008 Olympic Green Tennis Centre China
2008 RIAA Commendation for International Architecture
2008 World Architecture Shortlist
2006 The 2006 Trophy of Century Construction Outstanding Award Integrated Awards

04 Nationale@Docklands Melbourne
2006 Premier's Design Awards Finalist
2005 RIAA National Interior Architecture Award
2005 RIAA VIC Commercial Architecture Award
2005 Banksia Award for Leadership in Sustainable Buildings
2005 AGDA Distinction Award for Environmental Design Range and Program for Wayfinding Signage, Red Mustard
2005 MADC Bronze Award for Wayfinding Signage, Red Mustard
2005 Finalist, Australian Construction Achievement Award, Bovis Lend Lease

05 Sovereign House New Zealand
2008 ACENZ Award of Merit for Structural Engineering
2008 ACENZ Gold Award of Excellence for Fire Engineering
2008 DINZ Gold Spatial Design for Offices and Workplace Environments
2008 DINZ Stringer Best in Discipline Spatial Design for Offices and Workplace Environments
2008 NZIA Architecture Commercial and Industrial Award
2008 NZIA Interior Design Award
2008 RMB Commercial Project of the Year
2008 RMB QBE Insurance Retail and Business Project

06 Campus MLC North Sydney
2002 RIAA NSW Interior Architecture Award
2002 RIAA National Interior Architecture Award

07 Architecture Studios The University of Newcastle Sydney
1997 RIAA NSW Sir John Sulman Award for Excellence in Architecture
1997 BHP Colorbond Award for Innovation in Steel Design
1997 RIAA National Commendation, Sir Zelman Cowan Award
1995 Dangar Award, Newcastle

08 Monash University Law Building Melbourne
Completion 2011

09 Bendigo Bank Headquarters Victoria
Shortlisted 2009 RIAA VIC Regional Award
Shortlisted 2009 Property Council of Australia Awards
Shortlisted 2009 IDEA Awards
Shortlisted 2009 Premier's Design Awards

10 Ballarat Learning Exchange Victoria
2006 CEFPI Victorian Chapter Awards for Outstanding School Facilities, Best New Facility Individual
2005 RIAA VIC Regional Award
2005 Commendation for the Dulux Colour Award Commercial Exterior

11 Stockland Head Office Sydney
2008 RIAA NSW Milo Dunphy Award for Sustainable Architecture
2008 Environ BPN Sustainability Award
2008 Idea08 Best Commercial Interior
2008 Idea08 Best Sustainability Interior
2008 Property Council of Australia Office Developments Finalist
2008 Property Council of Australia Sustainable Developments Finalist
2008 RIAA NSW Interior Architecture Commendation
2008 Winner, BOSS Space Awards
2008 Wirtschaftswoche Best Office 2008 International Category
2007 MBA NSW Interior Fitouts \$25M+

12 C:DRIVE ASB Bank New Zealand
2003 NZIA Architecture Award
2003 NZIA Colour Award
2003 Property Council of New Zealand Special Purpose Excellence Award
2003 RICS People's Choice Award
2002 EECA Innovation Award
2002 New Zealand Institute of Building Innovation Award
2002 New Zealand Lighting Society Premier Award
2002 USA Architectural Record/Business Week Award

“What stands out about the project is the collaborative effort undertaken among all disciplines involved, including the end users.”

Referees
Peter Scott
Chairman
SKM
P.B.Scott@skm.com.au

Arie Freiberg
Dean, Faculty of Law
Monash University
Arie.Freiberg@law.monash.edu.au

LAWRENCE EDGE
PRESIDENT
WORLD DEVELOPMENT FEDERATION
EXCELLENCE AWARD
C:DRIVE ASB BANK